

707.794.8400 OFC
707.364.4990 Cell
@ClearBlue_CRE
info@clearbluecommercial.com



Clear Blue
COMMERCIAL

ClearBlueCommercial.com

REAL COMMUNITY ~ REAL SERVICE ~ REAL ESTATE

1372 N. McDowell Blvd. Petaluma CA



Office & Warehouse Space for lease

This class A mixed use building located in desirable Redwood Business Park, offers responsive management, build-to-suit improvements, professional offices, and production spaces with rollup doors. Easy access to Hwy 101, restaurants, lodging, recreation, retail stores, financial services and high speed internet!

Located an hour north of San Francisco, Redwood Business Park, is a 1,100,000 SF professional business park home to tenants such as Cross Check, Smart Train, Allianz and EnPhase. Directly off Highway 101 in Northeast Petaluma, Redwood Business Park offers attractive architecture, athletic courts, ample parking, and walking paths.

- User Space: Office
- Total Building Square Footage: 35,000 ± SF
- Rentable Space: 7,588 ± SF
- Min. Divisible: 1,673± SF
- Max. Contiguous: 3,288± SF
- Parking Ratio: 4:1,000 SF
- Zoning: PCD (Planned Community Development)



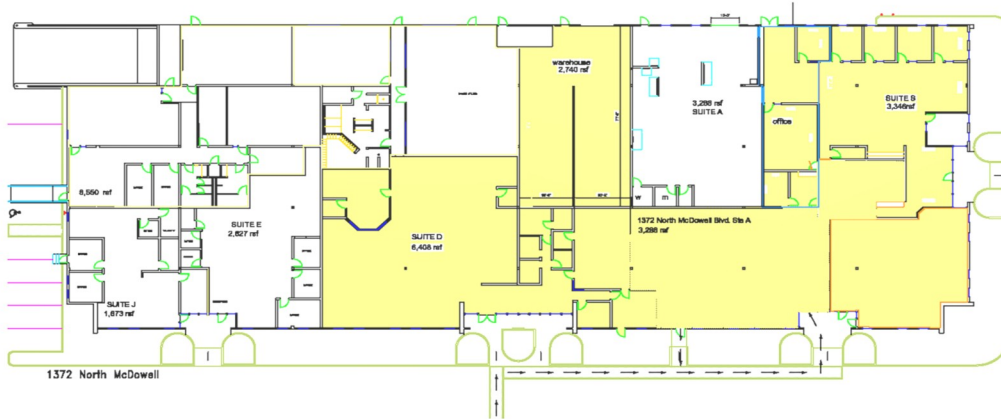
Carolyn Pistone
Lic # 01347717
Managing Director
REALTOR®, EcoBroker®,
Certified Green Building
Professional®

Clear Blue Commercial believes this information to be correct but has not verified this information and assumes no legal responsibility for its accuracy.

Clear Blue Commercial is the Bay Area's first commercial real estate company dedicated to environmental responsibility and social equity. Clear Blue Commercial empowers tenants and enriches landlords, while educating our community about sustainable building and business practices.

1372 N. McDowell Blvd. Petaluma CA

Office & Warehouse Space for Lease



- **Suite A: 3,288 sf office/warehouse with rollup door and 18 ft clear height ceiling**
- **Suite E: 2,627 sf office with soaring ceilings that can be built to suit your unique use.**
- **Suite J: 1,673 sf professional office with two offices, conference room, open area, file storage, and server room.**